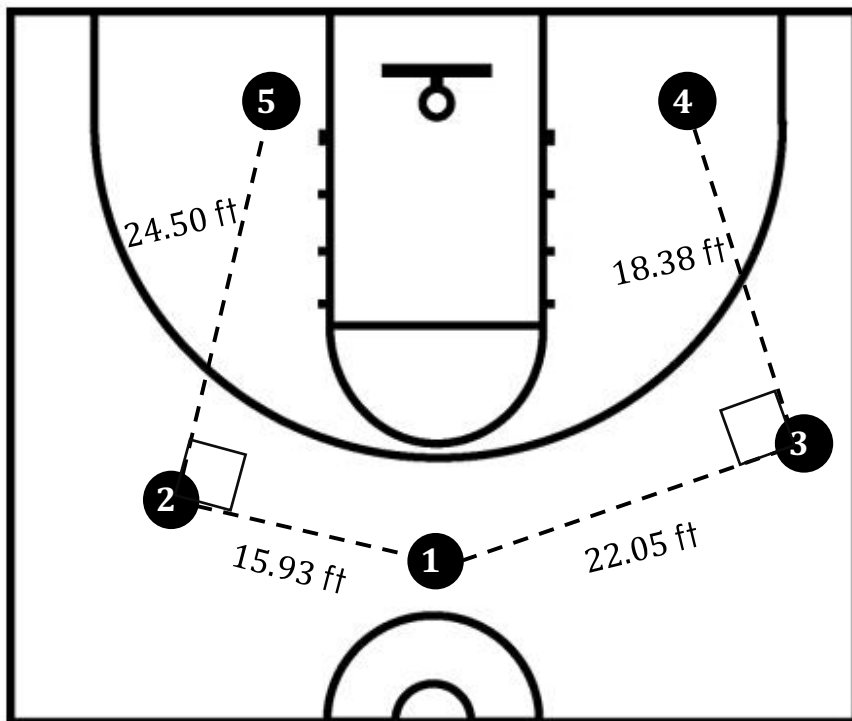


Name _____

Date _____

Right Triangles
The Pythagorean Theorem
Mini Assessment

1. Consider the diagram below that displays an offensive strategy for a basketball game.



The dashed lines represent distances between players. Suppose that player 1 gets the ball from either player 2 or 3. The next move is for player 1 to pass the ball to either player 4 or player 5. Which of these two players (4 or 5) is closer to player 1? Justify your answer.

